

# CHARMILL

RESIDENTIAL

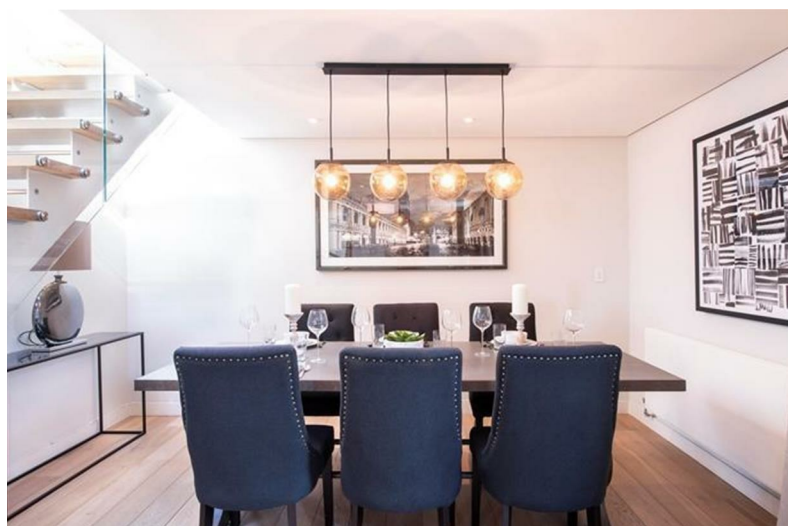
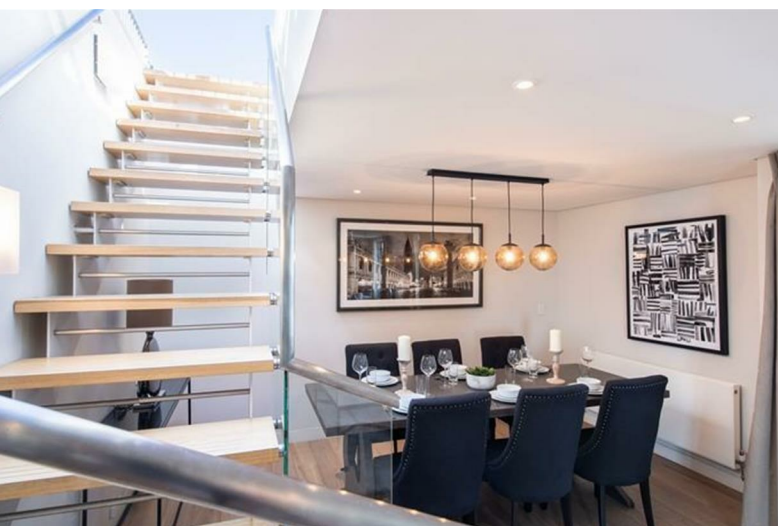


Harbet Road, Paddington W2

£2,600



# Harbet Road



## Description

A beautiful four-bedroom penthouse situated on the fifteenth floor of this prestigious building which features a concierge service, lift service, and secure underground parking. The apartment comprises spacious living and entertaining space with a beautiful reception room, a large terrace offering breath taking views over London, a superb modern fitted open plan kitchen, four bedrooms, three bathrooms and ample storage space.

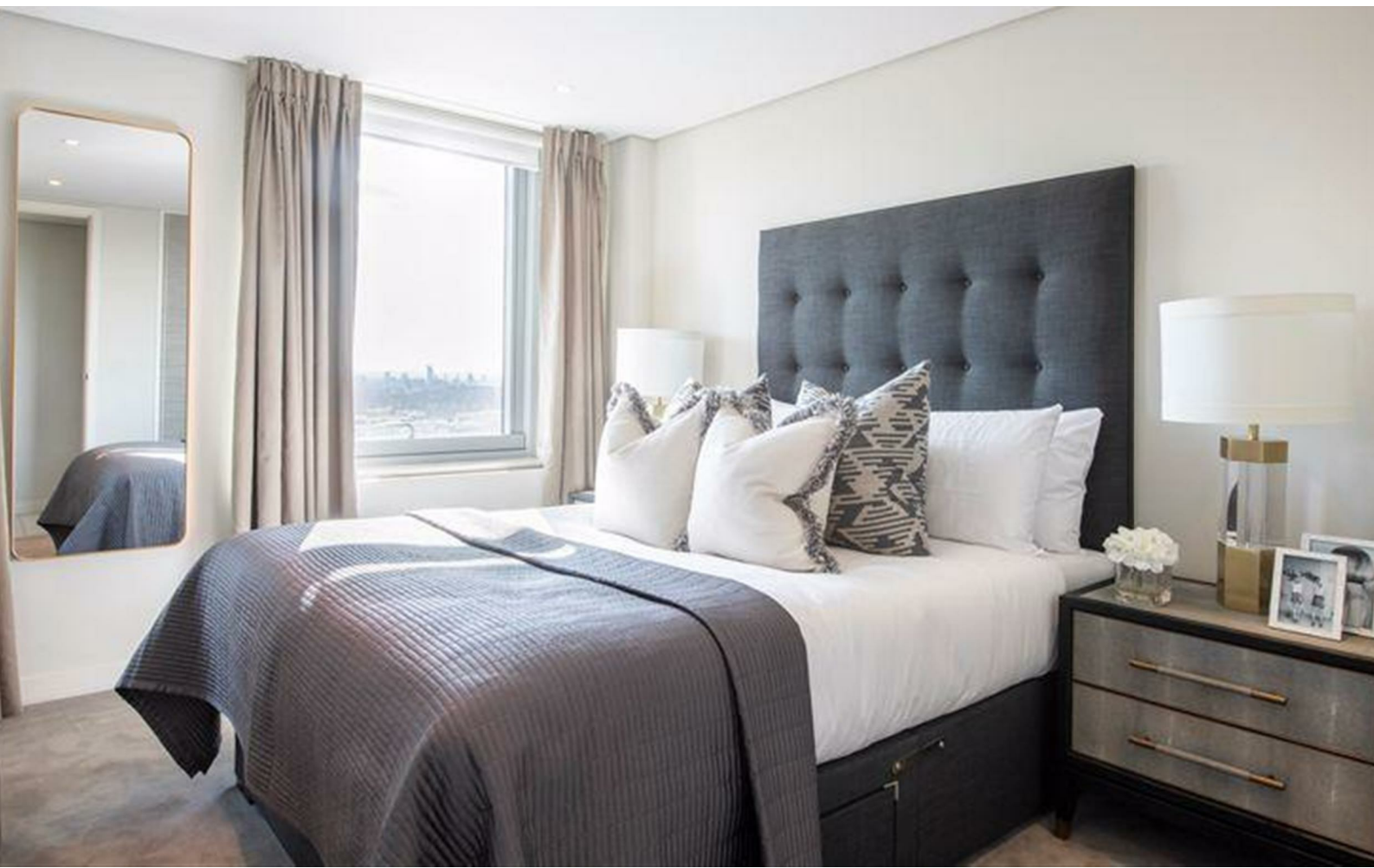
The apartment offers easy access to superb transport links such as Paddington Train Station (Bakerloo, Hammersmith & City, Circle, District lines and Heathrow) Edgware Road (Circle, District and Bakerloo lines).

Residential Land is the owner and managing agent of this property. Rent directly from us and pay no agency fees. All of our tenants benefit from a dedicated building manager who is on hand to assist with any property related issues. We also employ a dedicated team of maintenance experts and provide a 24-hour emergency helpline.

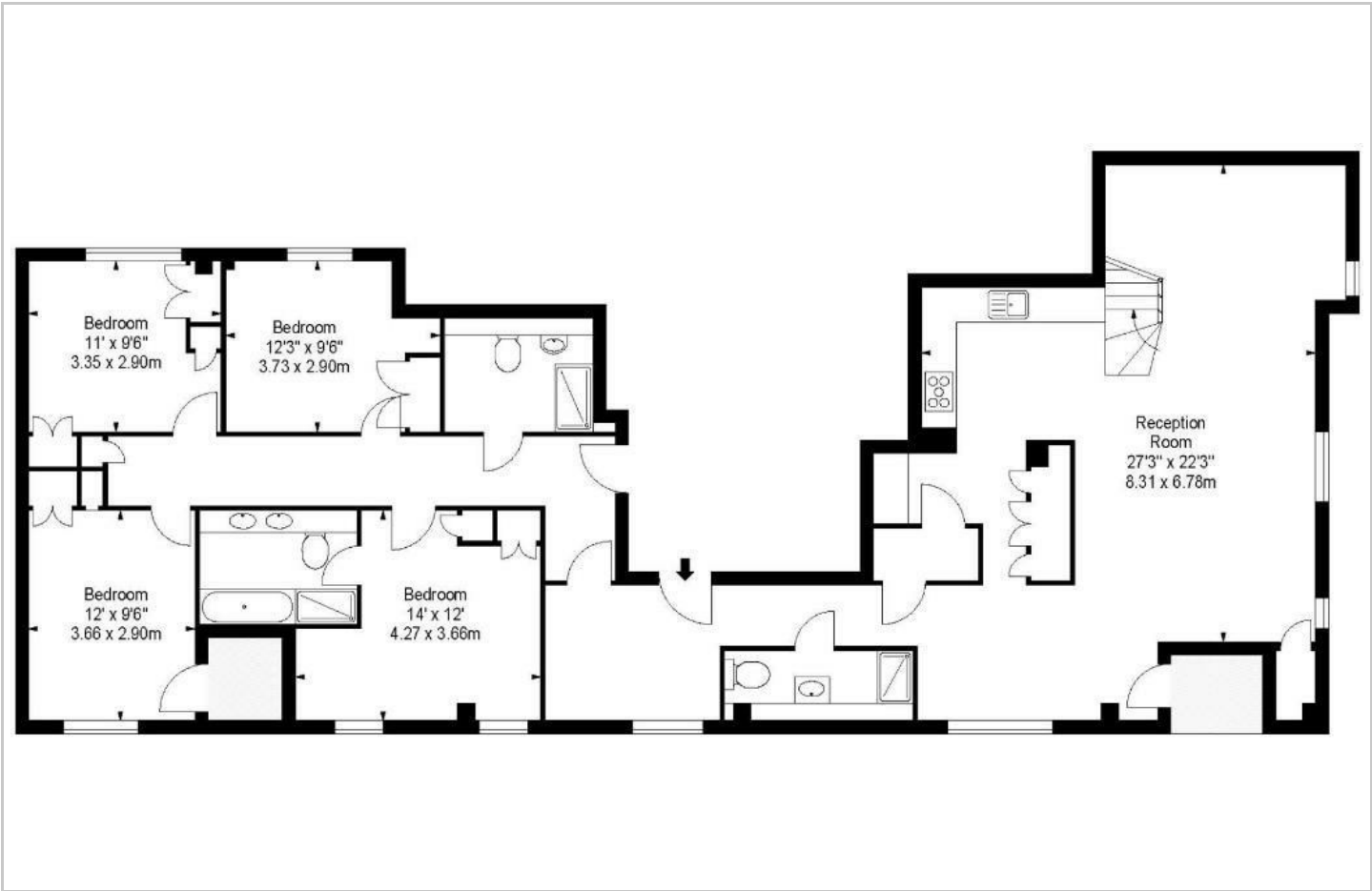
- Four bedrooms
- Three bathrooms
- Porter
- Roof terrace
- Furnished/Unfurnished



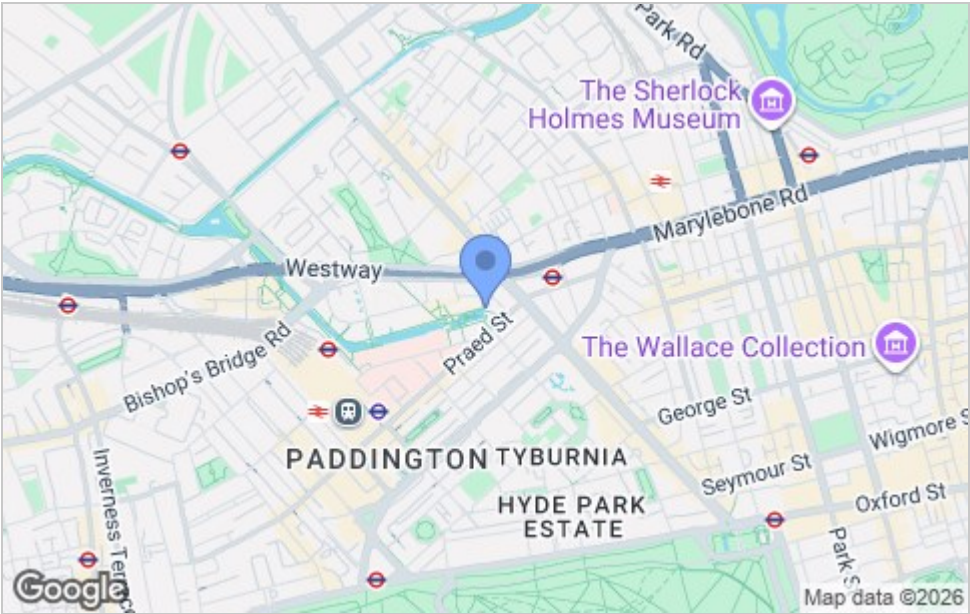




Floor Plan



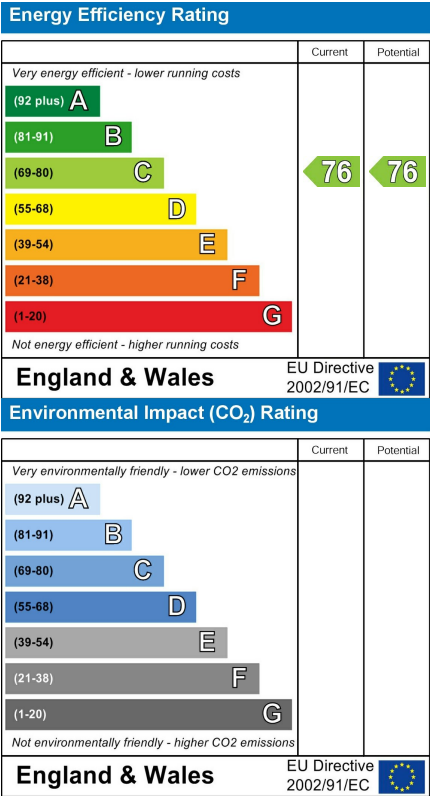
Area Map



Viewing

Please contact us on 020 7046 6275 if you wish to arrange a viewing appointment for this property or require further information.

Energy Efficiency Graph



These particulars, whilst believed to be accurate are set out as a general outline only for guidance and do not constitute any part of an offer or contract. Intending purchasers should not rely on them as statements of representation of fact, but must satisfy themselves by inspection or otherwise as to their accuracy. No person in this firm's employment has the authority to make or give any representation or warranty in respect of the property.

020 7046 6275 • sales@charmillresidential.co.uk • 51 Maida Vale, Little Venice, London W9 1SD  
charmillresidential.co.uk